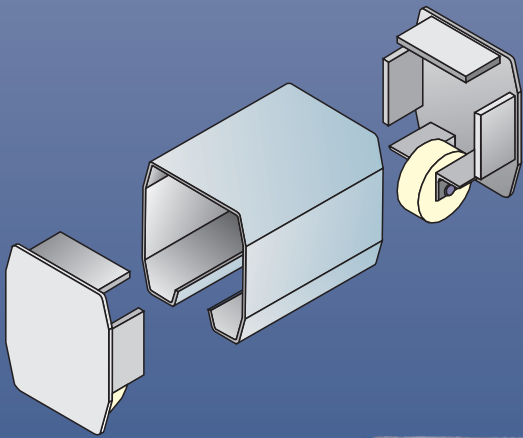
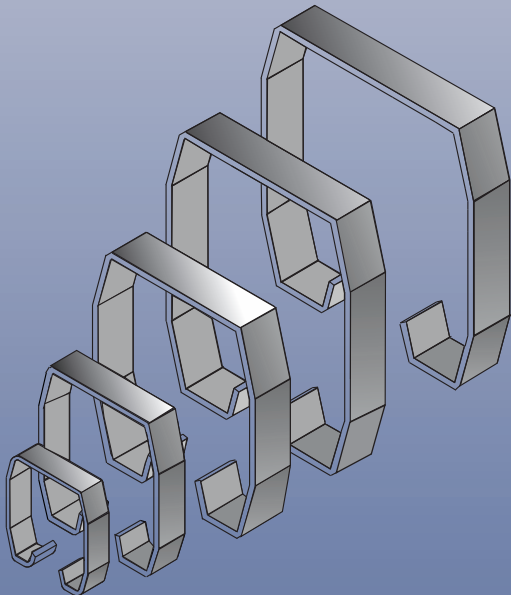


5 Sizes in Steel

1 Size in stainless Steel



ATTAS<sup>®</sup> - Profile Technology for cantilever sliding gates



## ATTAS<sup>®</sup> - Profile Technology

guarantees top quality in cantilever steel sliding gate construction with a clear passage of up to 20.0 m

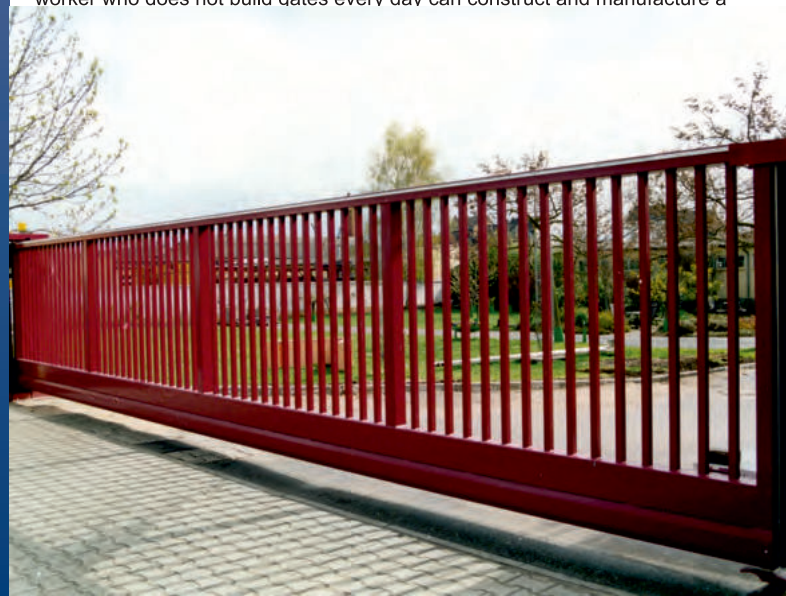
The ATTAS<sup>®</sup> steel gate system consists of cold-rolled steel profiles in 5 optimized sizes, with recessed profile edges for particularly high torsional rigidity. The special shape was specifically developed for the requirements of cantilever sliding gates.

The material used is sendzimir galvanized (hot-dip galvanized) fine-grain steel of grades S420MC and S355MC, in which not only the profile but also the longitudinal edges have a very high zinc coating. The profiles are supplied with an increased zinc coating of 350 g/m<sup>2</sup>.

**The FST 75 is also available in stainless steel.**

The track rollers and cover plates are made as a welded construction, partly from fine-grain steel, partly from stainless steel, depending on the requirements. The load of the gates is taken over by closed and therefore dust-protected, oversized ball or roller bearing-mounted polyamide carrier rollers made of PA6. With extra-wide running surfaces, ATTAS has a significantly higher resilience and, due to narrower tolerances in the profile and the support rollers, also a significantly reduced tendency to tip over.

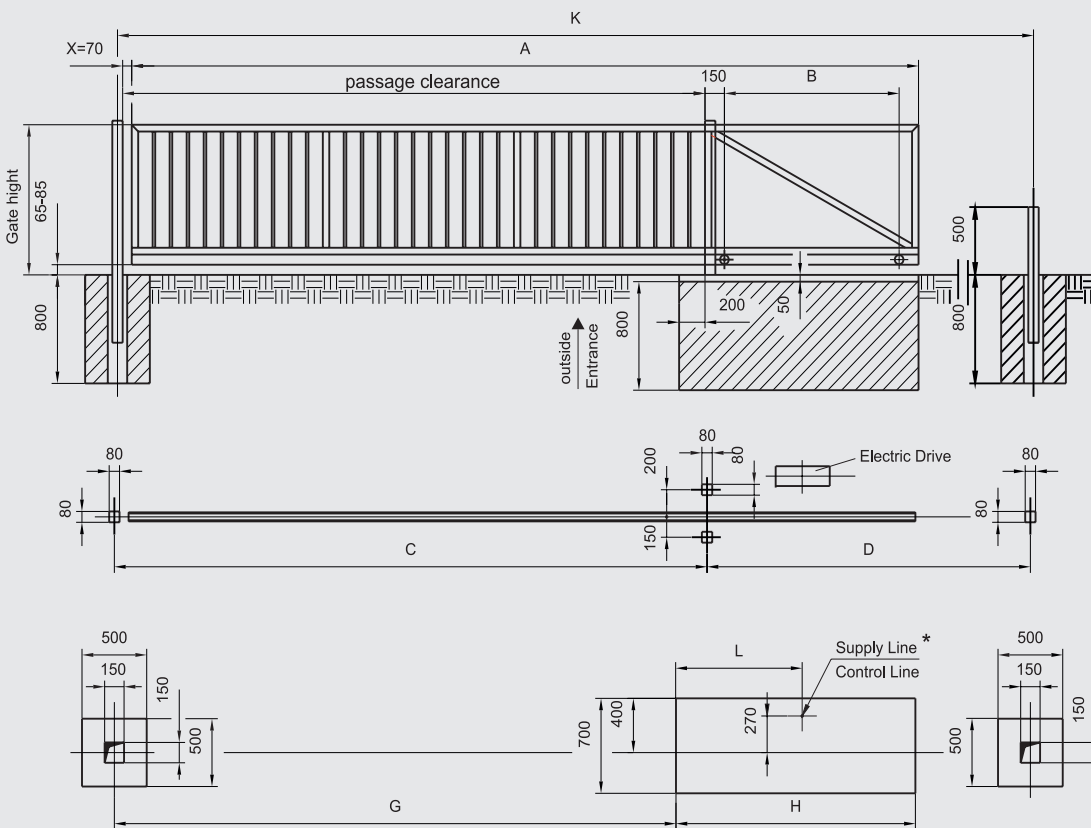
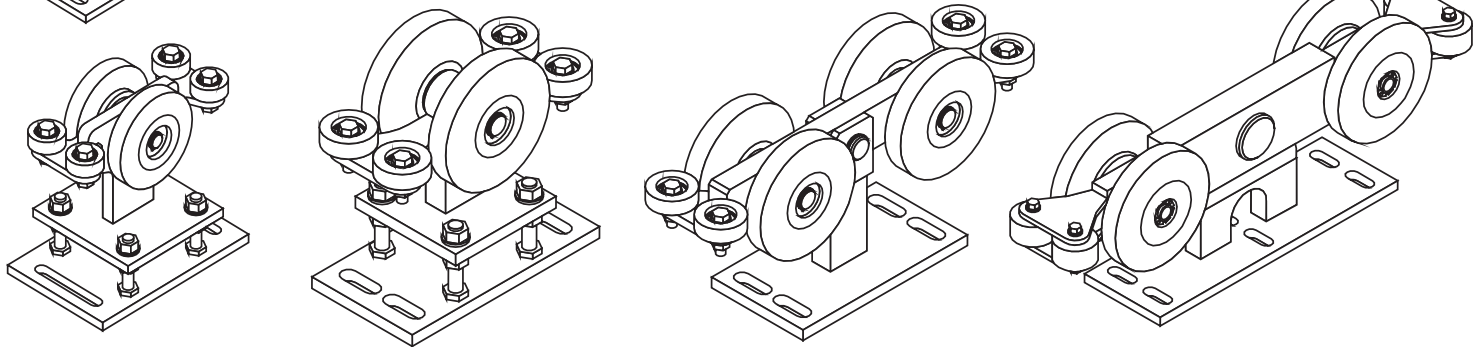
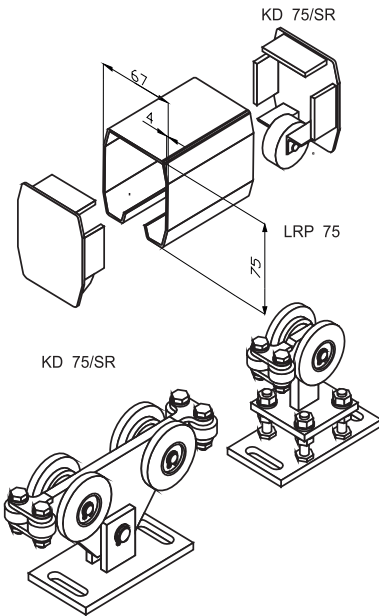
The ATTAS<sup>®</sup> steel gate system is designed in such a way that even the metal worker who does not build gates every day can construct and manufacture a



## Our Sizes

Passage Clearance, m	3,0	4,5	6,0	7,0	8,0	12,0	13,0	14,0	20,0	
FST 75*	█									
FST 75/S*	█		█							
FST 95	█		█		█					
FST 95/S	█		█		█		█			
FST 115	█		█		█					
FST 115/S	█		█		█		█			
FST 165	█		█		█		█			
FST 165/S	█		█		█		█			
FST 200	█		█		█		█		█	
FST 200/SL	█		█		█		█		█	
FST 200/S	█		█		█		█		█	

\*The FST 75 and the FST 75/S is also available in stainless steel



### Foundation plan for size FST 75 as a sample

The gate body is constructed conventionally in a statically stable design according to our specifications. The roller profile serves only as a guide and is screwed or welded under the gate body provided by the customer.

On request, test statics are available for special cases, in which the roller profile itself supports the construction, a lower beam is then not required.

Detailed construction plans, foundation plans and static specifications are available for every size. Before starting your gate construction, please find out about the precise requirements. ATTAS will be happy to provide you with the complete documentation.

**ATTAS GmbH**  
 Automatische Tür und Tor Antriebs Systeme  
**Boschstraße 25 71336 Waiblingen**  
 Tel. 07151 / 36 902-0 FAX 07151 / 36 902-190  
 Email info@attas.de Internet http://www.attas.de